

FORTIS CASES

Keyboard + fingerprint smart safety case operating instructions

Contents

- Product description 1
- Technical parameters 1
- Component names 2

keyboard + fingerprint smart safety case operating instructions

- 1 keyboard + fingerprint smart safety case operating instructions- 3
- 2 System basic information setting 4
- 3 Prompt setting description buzzer with keyboard LED 4
- 4 Keyboard function setting 5
- 5 Unlock 6
- 6 Add user 7
- 7 Modify password 9
- 8 Modify and add fingerprints 10
- 9 Delete password 12
- 10 Delete fingerprint 13
- 11 Delete user 14
- 12 Check the battery 15
- 13 Factory data reset 16
- 14 Cautions 16

Product description

Keyboard + fingerprint smart safety case, users can open the case by password or fingerprint, each safety case has an administrator, the case have password modification, fingerprint modification, add user, delete user and other operations. provide comprehensive security service for the safety case.

Technical parameters

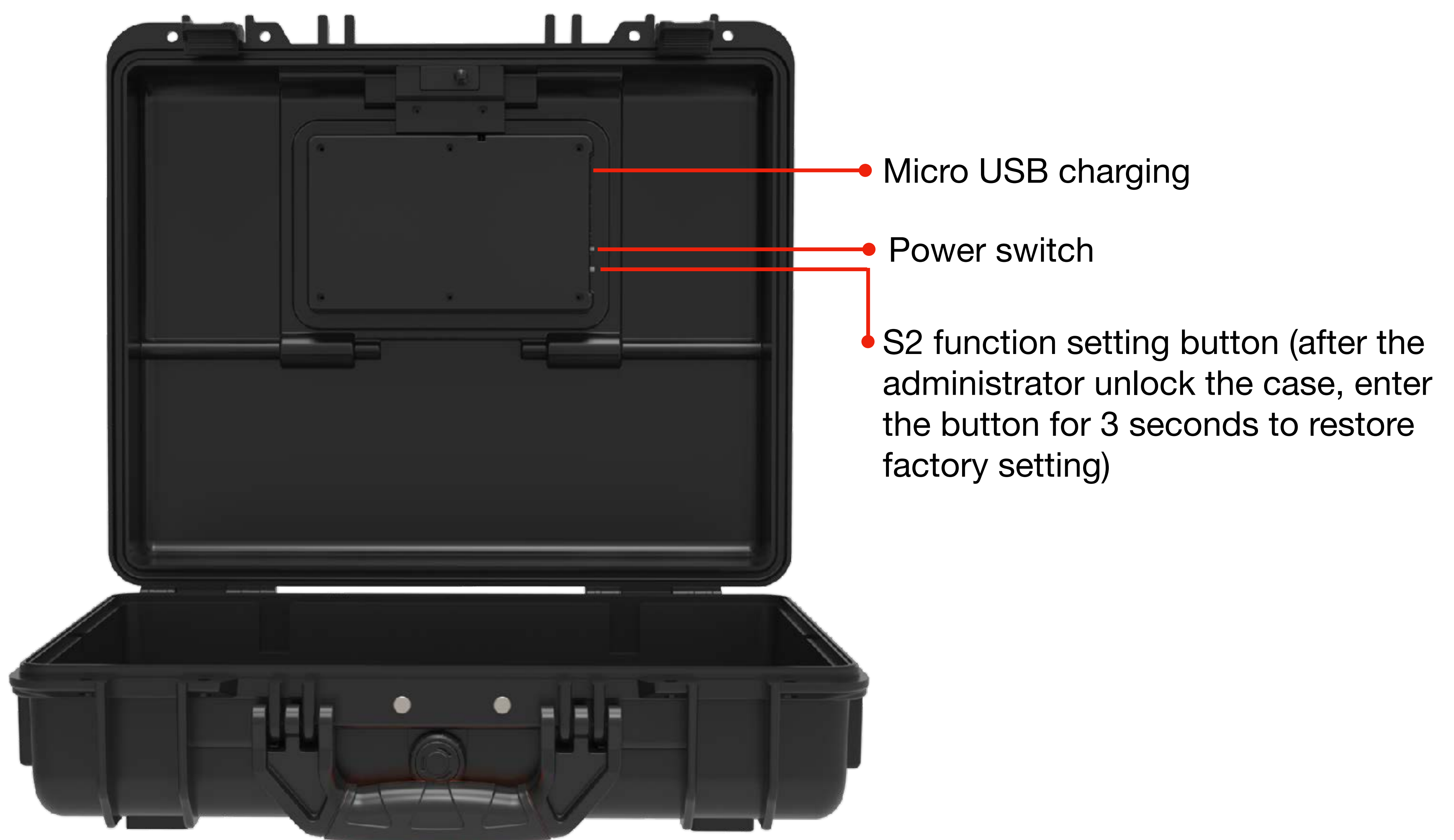
1. Processor: international famous brand with low power consumption and high-performance processor.
 2. Fingerprint identification: inductive fingerprint identification
 3. Management level: administrator and ordinary user
 4. Storage users: up to 10
 5. Fingerprints per user: up to 3
 - 6 charging: type-c USB external charging; Micro USB internal charging
- Battery: 3.7v polymer lithium battery, 8000mAH, no replacement
- Standby time: Up to 2 month

Component names

1 Keyboard + fingerprint smart safety case renderings



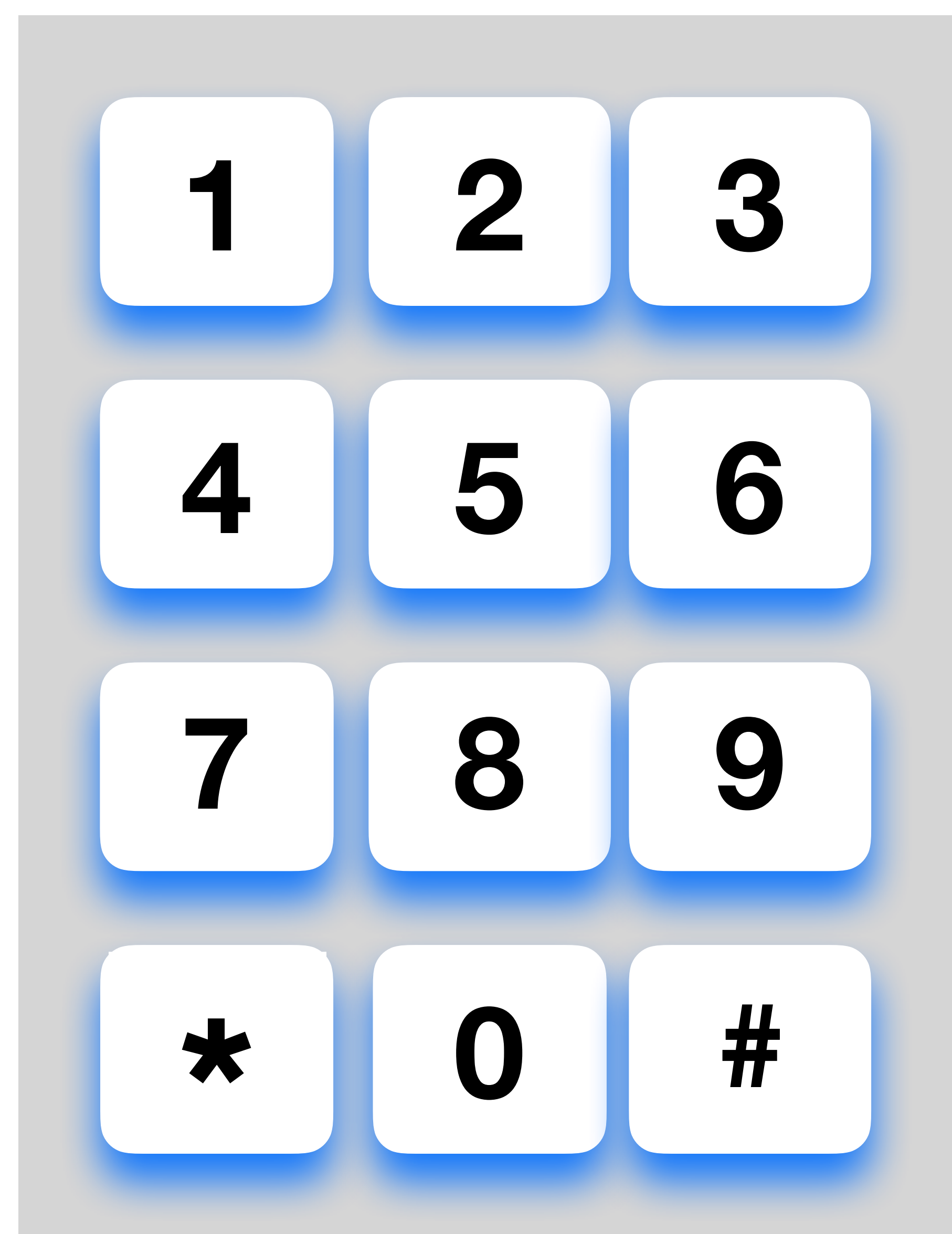
Picture 1: top cover of safety case module



Picture 2: inside cover of safety case module

Keyboard + fingerprint smart safety case operating instructions

- 1 Open the top cover of the smart safety case, the keyboard LED light becomes bright, close the top cover of the smart safety case, the keyboard LED light is off.
- 2 Enter the button or touch the fingerprint module and the keyboard LED lights up. The safety case is not operated within 10 seconds, the keyboard LED light is off, exit function mode directly.
- 3 Connect to the power adapter, and the smart safety case will issue a charging indicate (the keyboard LED light flashes 1 time, and the buzzer makes 1 long beep). Disconnect the power adapter, and the safety case will issue a charging indicate (the keyboard LED light flashes 3 times, and the buzzer makes 3 short beeps).
- 4 In any operation of all functional operation, enter the “ * ” to exit the safety case from the functional operation. The keyboard LED light flashes 3 times and the buzzer makes 3 short beeps.



Picture 1: the normal state of the keyboard

Picture 2: keyboard light up

System basic information setting

- 1 The system can save up to 10 user information, numbered 0-9;
- 2 User No. 0 is the administrator, and the initial password is 123456.
- 3 No. 1-9 is an common user. common users only have rights to unlock the case and check the battery .
- 4 The password can only be a six-digit password, and each user can save up to three fingerprint information;
- 5 Administrator's password can be changed, but can not be deleted;
- 6 Input the wrong password (fingerprint) for 5 times continuously within 3 minutes, the system will automatically give an alarm, and it cannot be operated within 3 minutes;

Setting instructions for buzzer and keyboard LED indicate

- 1 Operation successful indicate - keyboard LED light flashes 1 time, and the buzzer makes 1 beep
- 2 Operation failure indicate - keyboard LED light flashes 3 times, and the buzzer makes 3 short beeps
- 3 Case not closed alarm - keyboard LED flashing for 2 minutes, the buzzer beeping for 2 minutes
- 4 5 consecutive wrong password or fingerprint alarm in 3 minutes -- keyboard LED light flashing for 1 minute, The buzzer honked for a minute

Keyboard function setting



Picture 1: keyboard plate

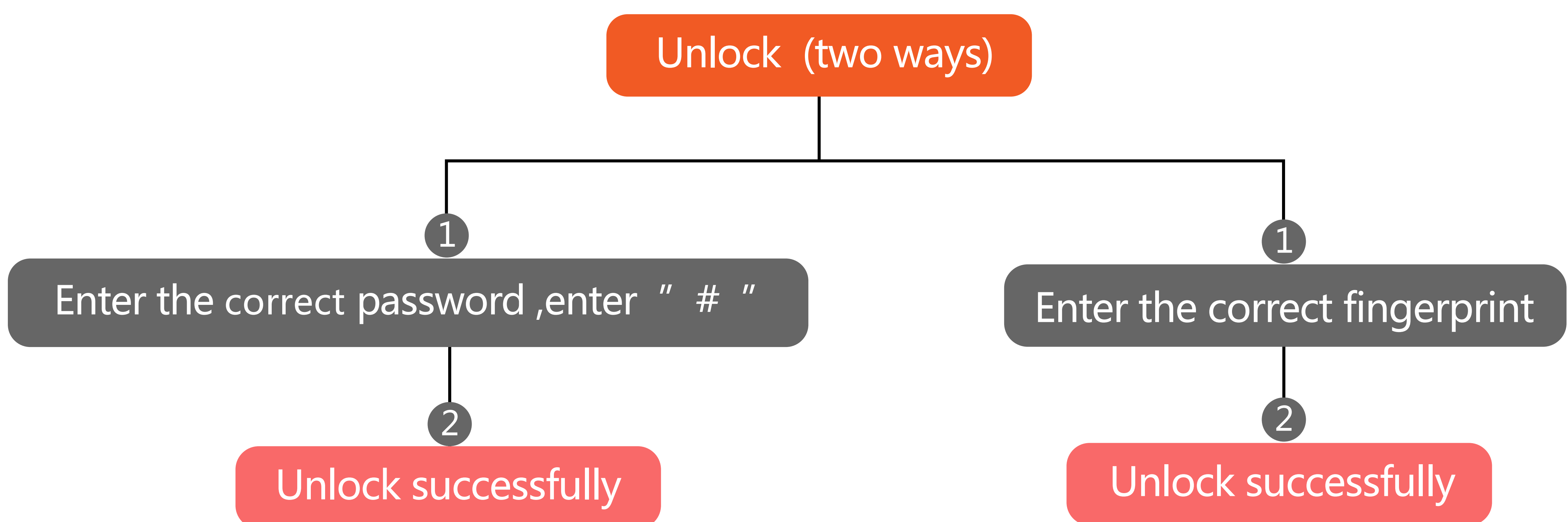
Keyboard	Short enter	Long enter (more than 3s)	Note
0	Enter the number "0"	Delete user	
1	Enter the number "1"	Add user /modify password	
2	Enter the number "2"	Add /modify fingerprints	
3	Enter the number "3"	Delete password	
4	Enter the number "4"	Delete fingerprint	
5	Enter the number "5"	Check the battery	
6	Enter the number "6"	/	
7	Enter the number "7"	/	
8	Enter the number "8"	/	
9	Enter the number "9"	/	
*	Return	Cancel unclosed case alarm	
#	Confirm	/	
S2 (inside)	/	Factory data reset	

Picture 2: keyboard function setting table

Unlock

1 How to unlock ?

- A Enter the correct six-digit password, enter “ # “ to open the safety case, or enter the correct fingerprint directly to unlock the safety case.
- B If the six-digit password is wrong or password with less than six digits, enter the “ # “ , the case will appear an error indicate.



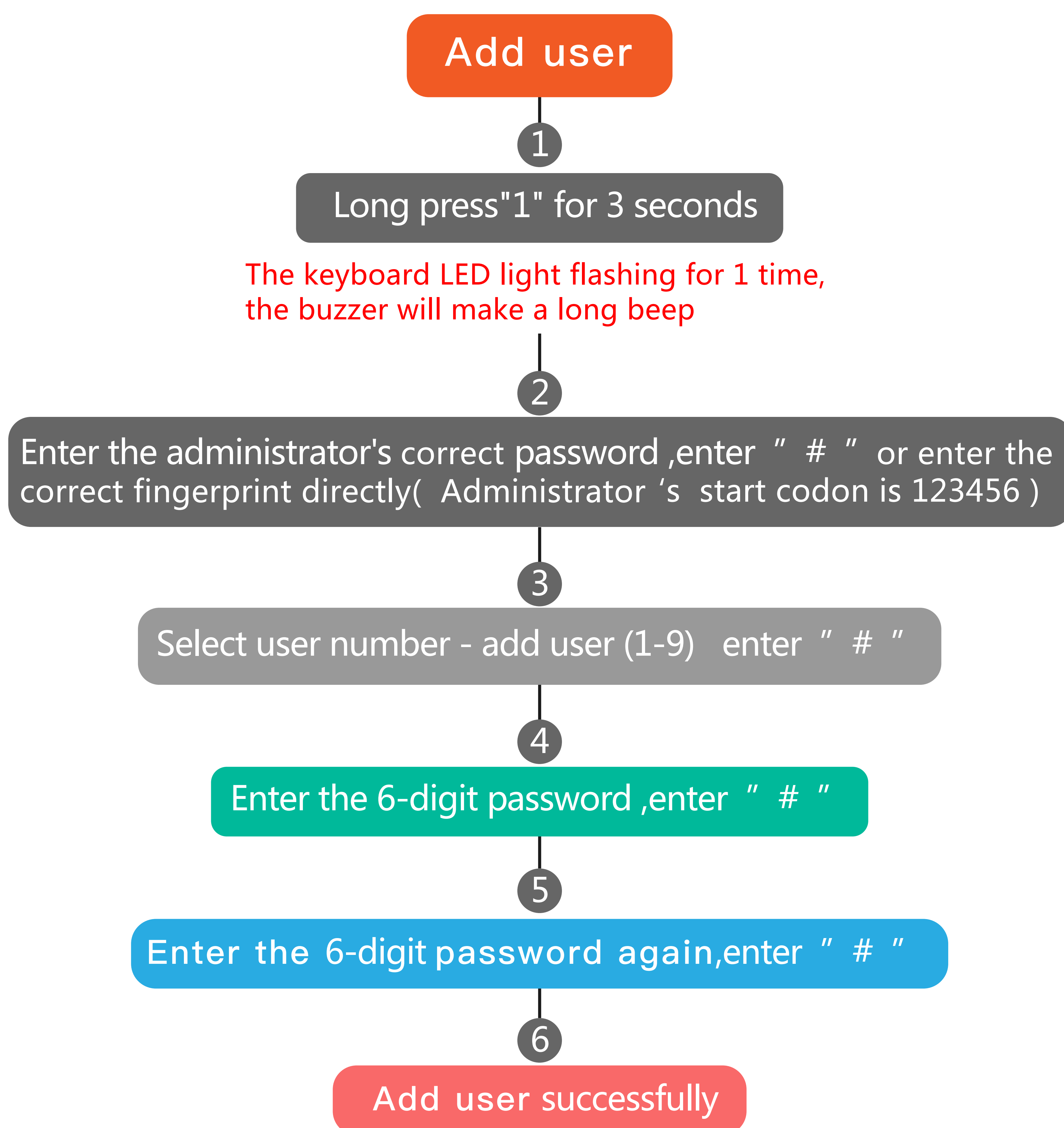
- C If you input the wrong password or fingerprint for 5 times in 3 minutes, the safety case will give an alarm for 1 minute (the keyboard LED light flashes and the buzzer long beep), and the safety case cannot be operated within 3 minutes.

- D** 1 minute after the safety case unlocked, if the safety case is not closed or closed properly, the safety case will alarm and indicate for 2 minutes (**keyboard LED light flashing, buzzer long beep**); During the alarm process, confirm to close the case and the safety case will stop the alarm; Within 1 minute after the 2-minute alarm indicate stops, if the safety case is still not closed, the safety case will give a cyclic alarm indicate. Long press “ * ” to cancel the alarm.

Add user

- 1** How to add user?
- A** The current safety case has an administrator by default, the user number is “0”, other added user numbers is “1-9”, and the administrator start codon is “123456”. only the administrator has the permission to use the function of add user.
- B** Long press the “1” key for 3 seconds, and with the keyboard LED light flashing 1 time, the buzzer will make a long beep, and the safety case will enter the add user mode (**add user mode is consistent with the operation of password modify mode**)
- C** Enter the correct administrator’s password, enter “#”, or enter the correct fingerprint directly. If the password and fingerprint are not correct, the safety case will exit the add user mode.

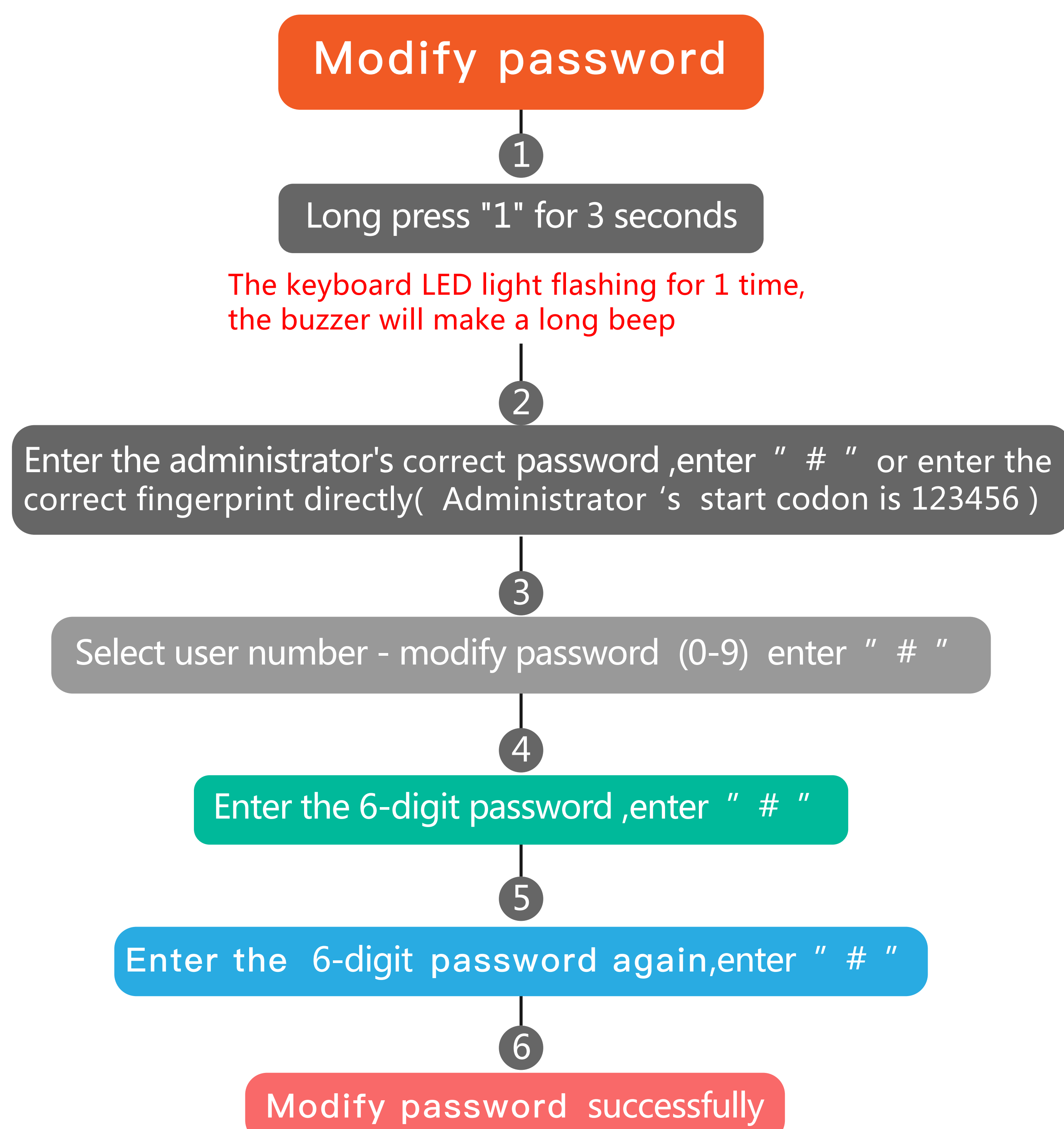
- D Enter the user number (1-9) and enter "#" to enter the password process. **The user number takes the last number entered (if the user enters 1, then 2, and then enter " #" before the " #" key is not entered, the system enters 2 by default)**
- E Enter a six-digit password and enter "#" to enter the new password again.
- F Enter the new six-digit password repeatedly and enter "#". If the new password entered twice is consistent, the password will be changed successfully. Otherwise, the safety case will exit the add user mode.



Modify password

1 How to modify password?

- A The operation of modify password is consistent with add user. Long press "1" for 3 seconds. With the keyboard LED light flashes for 1 time, the buzzer will make a long beep, and the safety case will enter the mode of modify password.
- B Enter the correct administrator's password , enter "#", or enter the correct fingerprint directly.
- C Select the number of the user you want to modify, enter the number (0-9 including the administrator). Enter the new password of 6 digits first, enter "#", confirm the new password of 6 digits again, enter "#", if the new password entered twice is the same, the password will be modified successfully. Otherwise, the smart safety case exits the modify password mode.

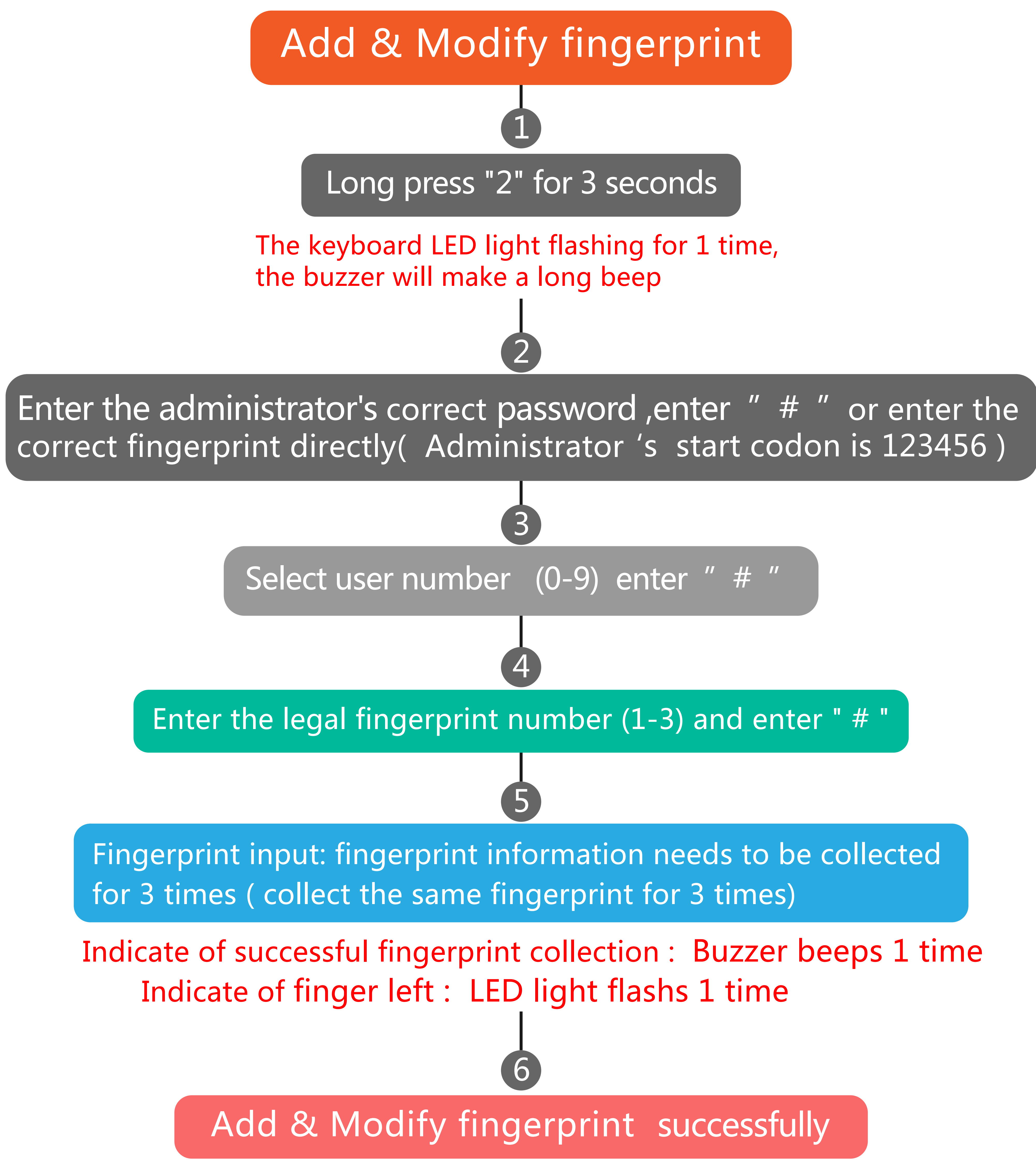


Add & Modify fingerprint

1 How to add & modify fingerprint?

- A The operation of modify fingerprint is consistent with add fingerprint. All users can only add 3 fingerprints at most, so the legal fingerprint number is (1-3).
- B Long press "2" key for 3 seconds, and with the keyboard LED light flashes for 1 time , the buzzer will make a long beep, and the safety case will enter the mode of add & modify fingerprint.
- C Enter the correct administrator's password , enter "#" ,or enter the correct fingerprint directly . If the password and fingerprint are incorrect, the safety case exits the add & modify fingerprint mode.
- D Enter the user number (0-9) and enter "#" to enter the process of selecting the fingerprint number to be modified.
- E Enter the legal fingerprint number (1-3) enter "#" to enter the fingerprint input process; The number of the fingerprint is the last number entered. If the number of the fingerprint is illegal, the safety case will exit the add & modify fingerprint mode.

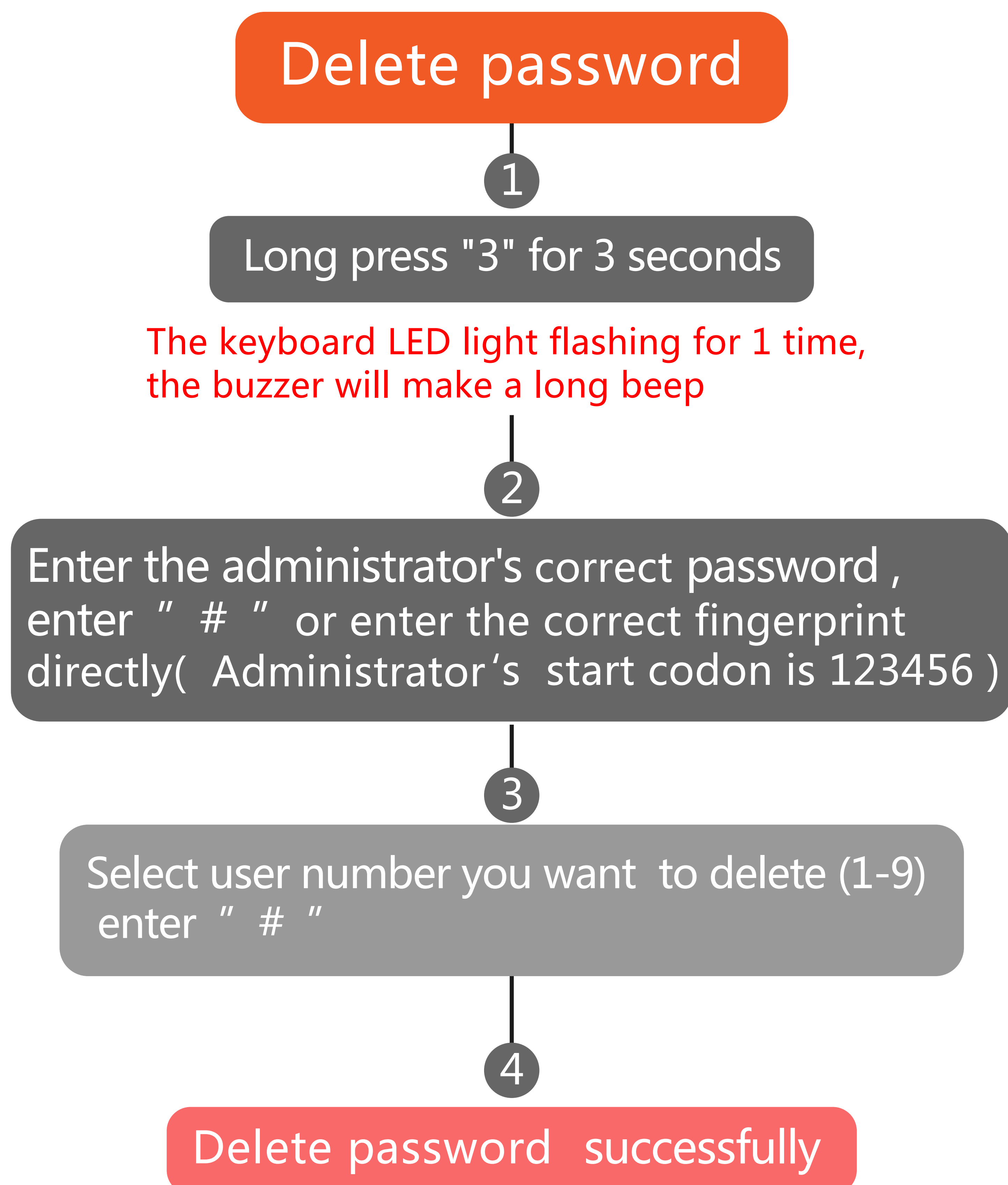
F In the process of fingerprint input, the finger is placed on the fingerprint module. If the fingerprint information is collected successfully, the buzzer will beep 1 time. After the finger leaves the fingerprint module, the keyboard LED light will flash for 1 time, and the fingerprint information needs to be collected for 3 times. If the collection of fingerprint information fails or the fingerprint modification is not successful, the safety case will exit the fingerprint modification mode.



Delete password

1 How to delete password ?

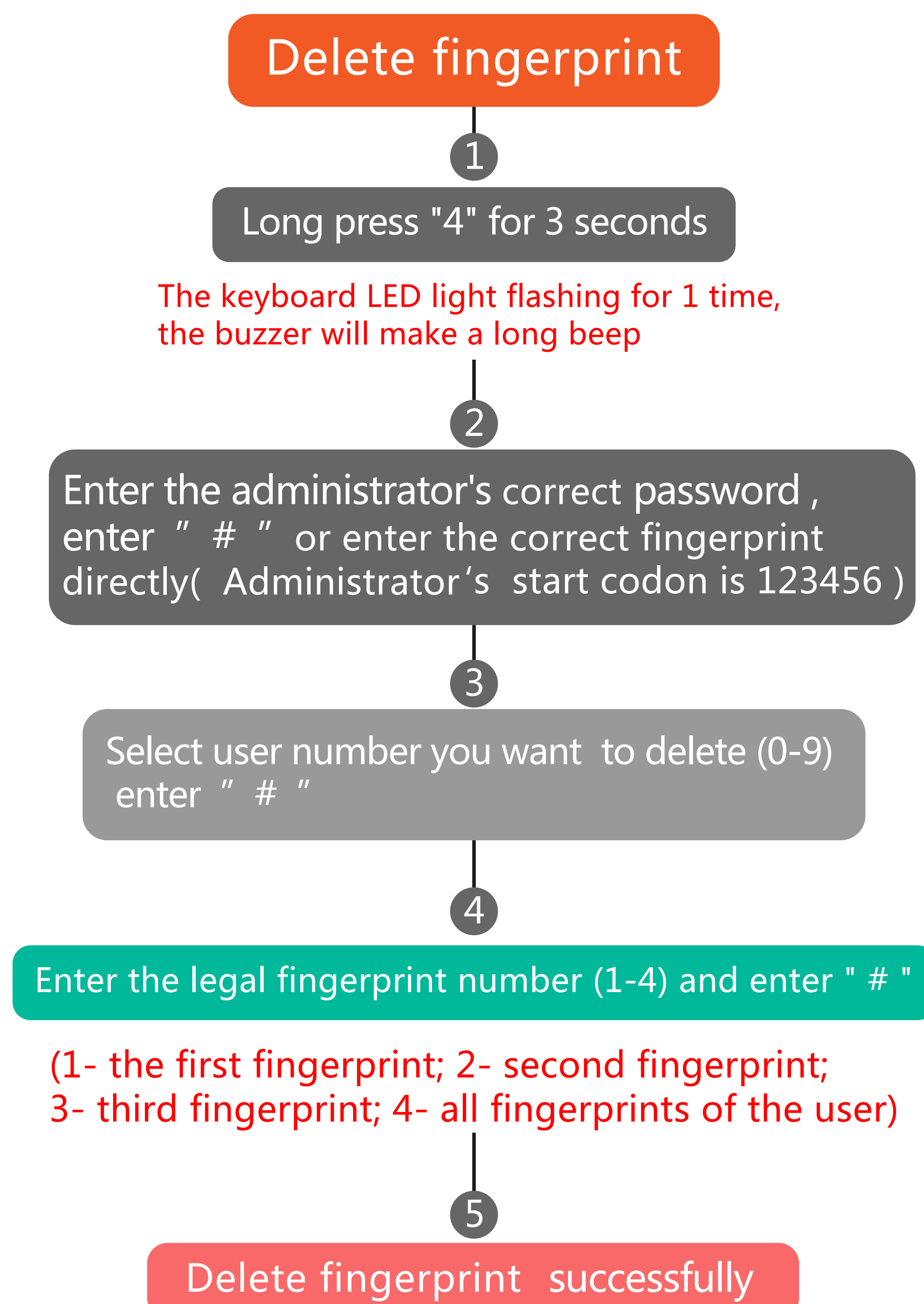
- A Long press "3" key for 3 seconds. With the keyboard LED light flashes for 1 time , the buzzer will make a long beep, and the safety case will enter the delete password mode.
- B Enter the correct administrator's password , enter "#" ,or enter the correct fingerprint directly.
- C Selecting the user number to be deleted, enter the user number (1-9) and enter "#" to delete the user password.



Delete fingerprint

1 How to delete fingerprint?

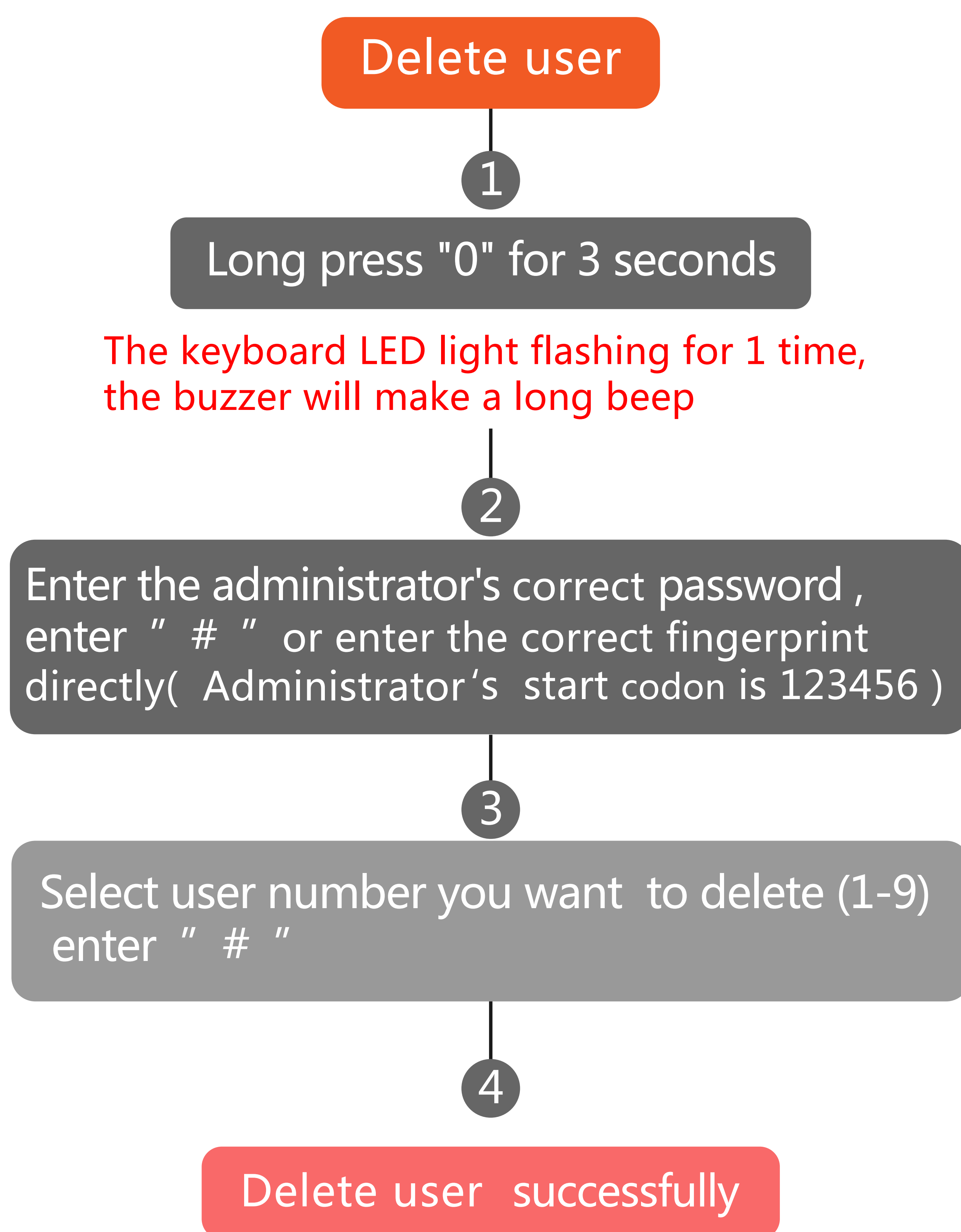
- A Long press "4" key for 3 seconds. With the keyboard LED light flashes for 1 time, the buzzer will make a long beep, and the safety case will enter the delete fingerprint mode.
- B Enter the correct administrator's password , enter "#", or enter the correct fingerprint directly.
- C Selecting the user number to be deleted, enter the user number (0-9) and enter "#" to enter the process of selecting the fingerprint number to be deleted.



- D Enter the legal fingerprint number (1-4) and enter “#” key to delete the corresponding fingerprint. The fingerprint number takes the last input number. If the fingerprint number is illegal, the safety case will exit the delete fingerprint mode. (1- the first fingerprint; 2- second fingerprint; 3- third fingerprint; 4- all fingerprints of the user)

Delete user

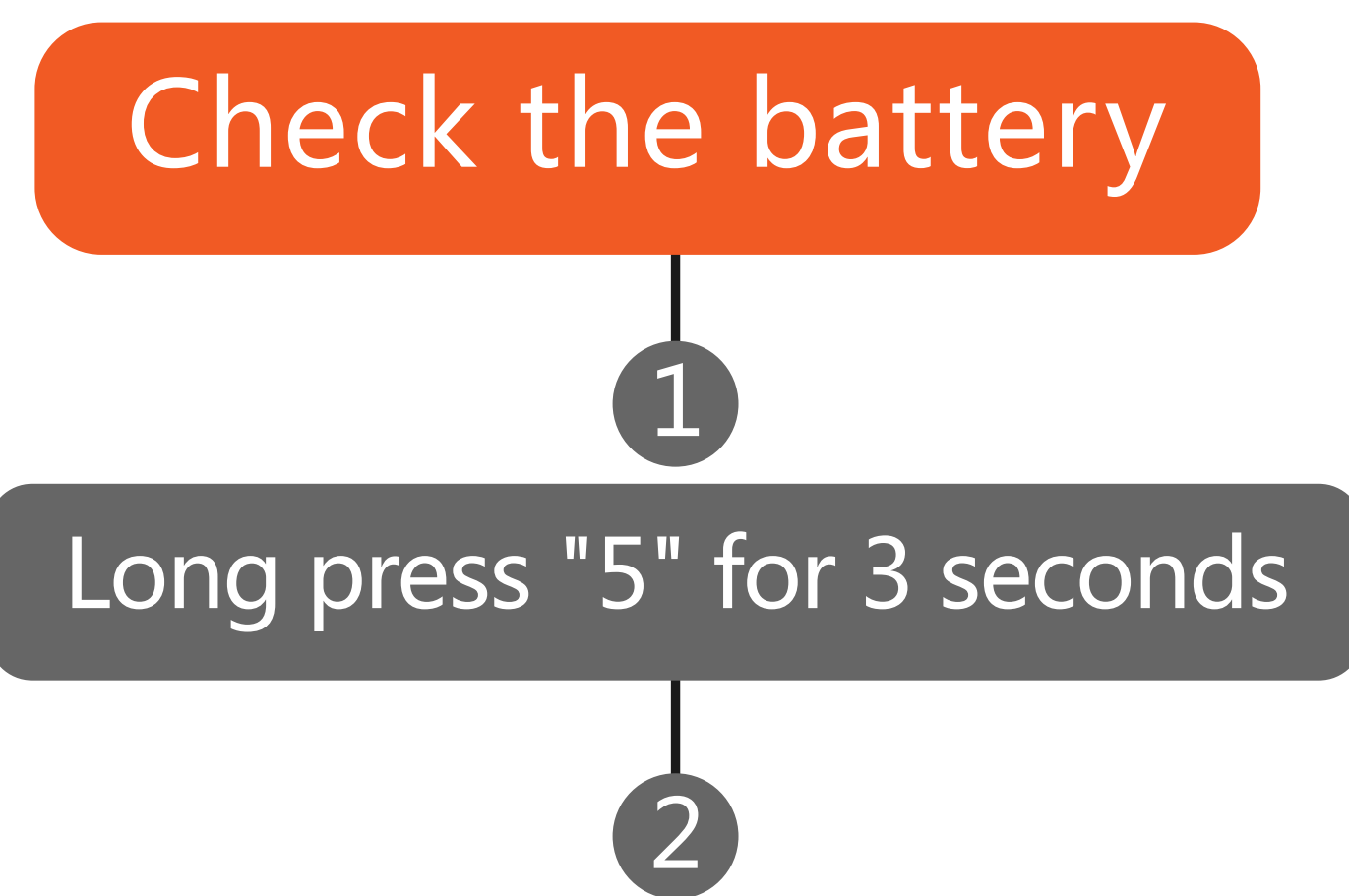
- 1 How to delete user?
 - A Long press “0” key for 3 seconds to enter the mode of delete user.
 - B Enter the correct administrator’s password , enter “#” ,or enter the correct fingerprint directly.
 - C Selecting the user number to be deleted, enter the user number (1-9) and enter “#” key, the user is deleted successfully.



Check the battery

1 How to check the battery?

- A Long press "5" key for 3 seconds to enter the mode of check the battery.



If the power is less than 10%, the keyboard LED light flashes 1 time, and the buzzer makes 1 long beep
If $10\% < \text{power} < 30\%$, the keyboard LED light flashes 2 times and the buzzer makes 2 long beeps
If $30\% < \text{power} < 50\%$, the keyboard LED light flashes 3 times and the buzzer makes 3 long beeps
If $50\% < \text{power} < 80\%$, the keyboard LED light flashes 4 times and the buzzer makes 4 long beeps
If $80\% < \text{power}$, the keyboard LED light flashes 5 times, and the and the buzzer makes 5 long beeps

Factory data reset

1 How to factory data reset?

A Open the safety case , long press "S2" key for 3 seconds, **(The S2 key is located inside the safety case)** if the administrator used password or fingerprint to open the safety case, safety case will delete all user information (password + fingerprint), and the administrator password back to the default password is "123456".

