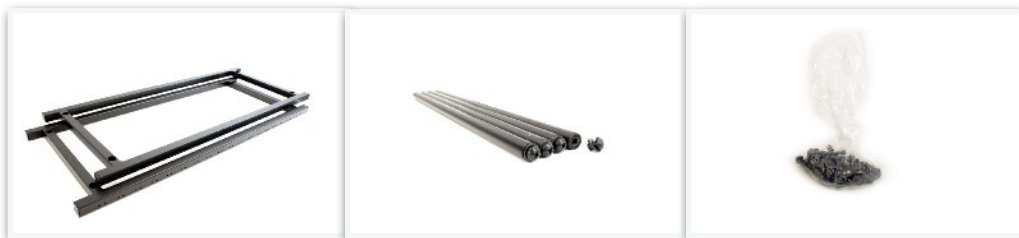


Studiospares 16U Equipment Rack - Assembly Instructions

Included items: -



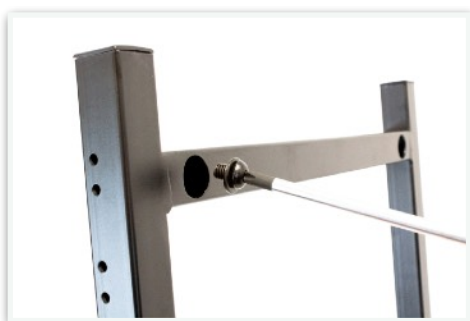
Assembly: -

Step 1



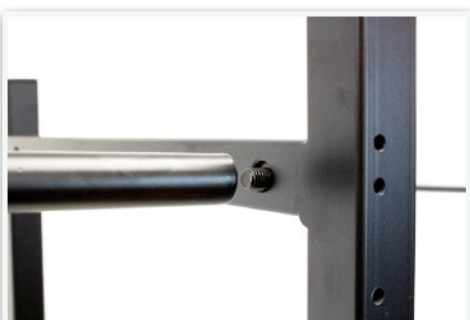
Take the two outer frames and arrange the placement so the outer face (larger holes) is on the outside and then the inner face (smaller holes) is on the inside of the placement.

Step 2



Take one of the screws included with the support poles and insert into the large outer face hole.

Step 3



Align the screw and support pole.

Step 4



Screw the screw into the support pole until firmly in place.

Step 5



Repeat the process until all four support poles are attached as seen in the photo.

Step 6



Remove any remaining screws from the support poles before the next stage of attaching the second outer frame.

Step 7



Place/align the second outer frame with the already attached support poles. Ensure the larger holes (outer face) are on the outside, like in Step 1.

Step 8



Screw the screws into the support pole again until firmly in place, like in Step 4.

Step 9



Once completed the Studiospares 16U Equipment Rack should look like the following.